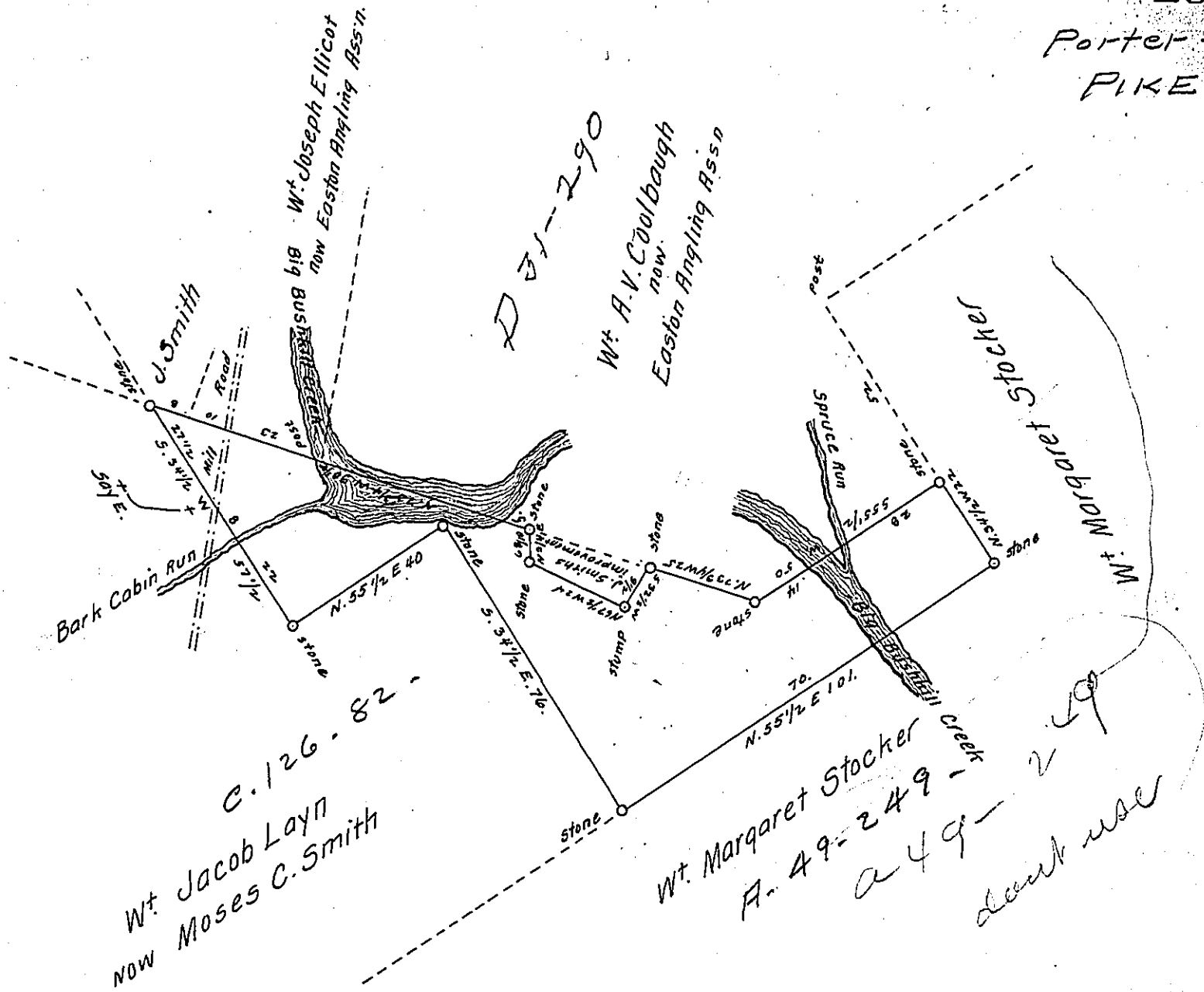


Porter -
PIKE



A Draft of a tract of land situated in the Township of Porter and County of Pike, containing Twenty nine acres 12 1/2 perches and allowance of six per cent. for roads, etc. Surveyed the second day of April 1900, in pursuance of a warrant granted to C.C. Shull dated the 16th day of January-1900.

To James W. Latta, Esq,
Secretary of Internal Affairs)

Frank Scharr
County Surveyor.

IN TESTIMONY that the above is a copy of the original remaining on file in the Department of Internal Affairs of Pennsylvania, made conformably to an Act of Assembly approved the 16th day of February, 1833, I have hereunto set my Hand and caused the Seal of said Department to be affixed at Harrisburg, this first day of March 1907.

George D. Brown
Secretary of Internal Affairs.